




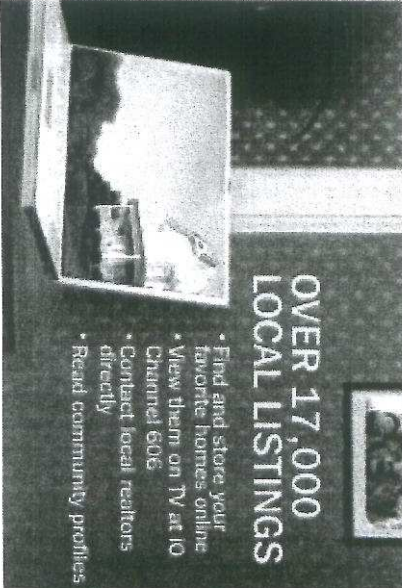
Shirksville Rd & Greble Rd
Jonestown PA
17038 US

Notes:

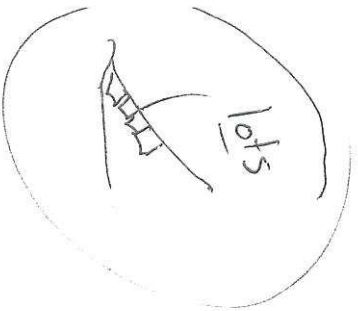
START YOUR SEARCH NOW 

OVER 17,000 LOCAL LISTINGS

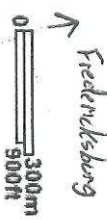
- Find and store your favorite homes online
- View them on TV at 10 Channel 606
- Contact local realtors directly
- Read community profiles



MAPQUEST



Map showing streets: Shirksville Rd, School Dr, Fortna Rd, Brendle Ln, Deep Run, Greble Rd, S Center St, Man Field Ln, Deer Dr, Elk Dr, Pine Meadows Golf Course, S Pine Grove St, Golf Rd, Pine Meadow Rd, Dead End Rd, S Vataria Rd, Eliza St, S Vataria Crk, and Greble Rd.



Fredericksburg



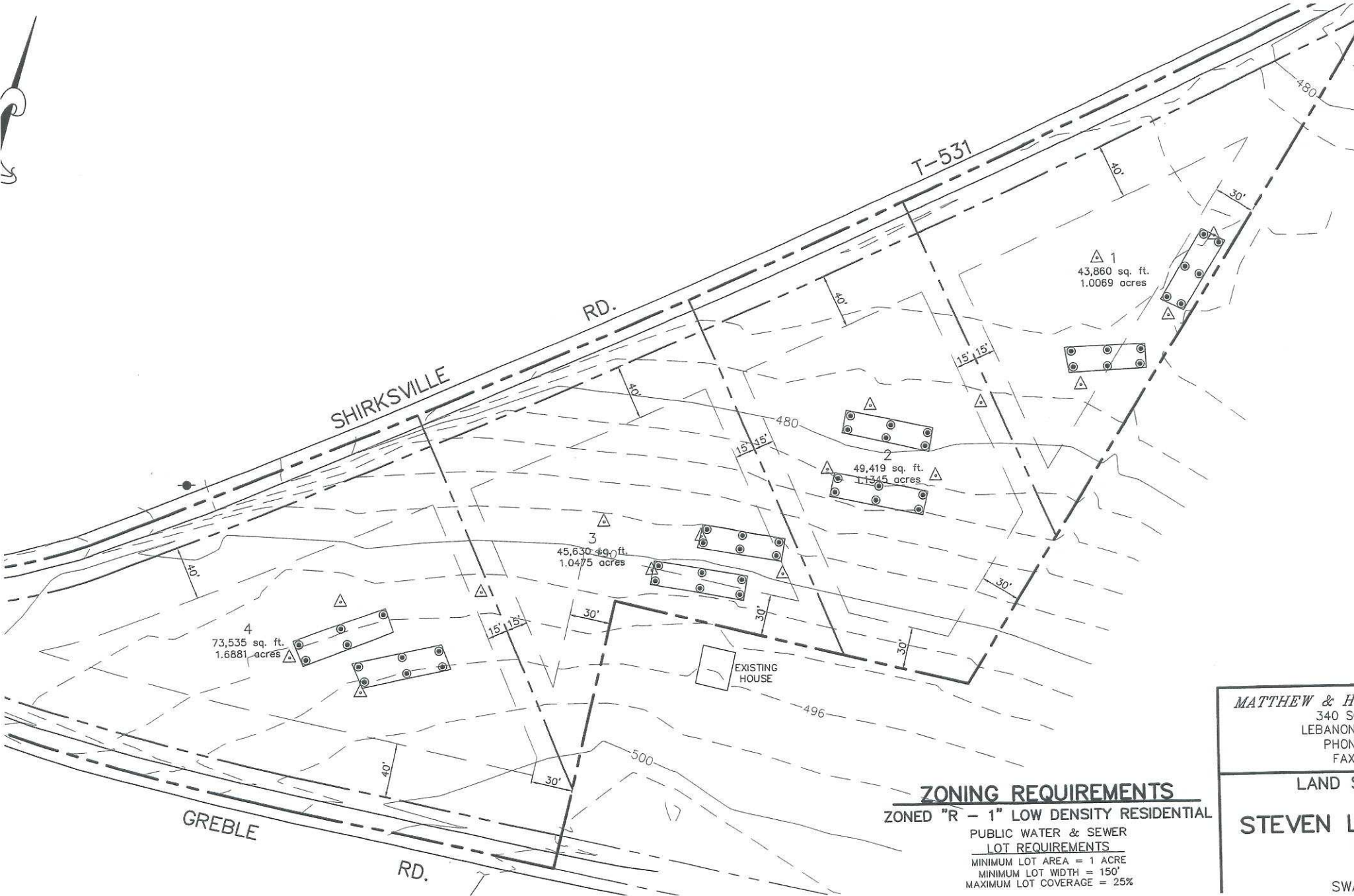
© 2006 MapQuest, Inc

All rights reserved. Use Subject to License/Copyright

This map is informational only. No representation is made or warranty given as to its content. User assumes all risk of use. MapQuest and its suppliers assume no responsibility for any loss or delay resulting from such use.

© 2006 NAVTEQ

7th Street - Lebanon



ZONING REQUIREMENTS
 ZONED "R - 1" LOW DENSITY RESIDENTIAL
 PUBLIC WATER & SEWER
LOT REQUIREMENTS
 MINIMUM LOT AREA = 1 ACRE
 MINIMUM LOT WIDTH = 150'
 MAXIMUM LOT COVERAGE = 25%

MATTHEW & HO
 340 SOU
 LEBANON, I
 PHONE:
 FAX:
 LAND SU
STEVEN L.
 SWAT.